

ENTREPRENEUR'S MEETING POINT



a[r]challenge



veredes



Designing the Future



future

01

LOCATION

Know the 22@ District, the Silicon Valley of Europa. Planing of the project.

02

PROGRAM

Working strategies. Spaces and uses of the proposal.

03

GENERAL INFORMATION

¿Can we enroll?
¿How is the deliever?
¿What conditions?
¿Where to inform?

04

INSCRIPTION

Calendar
Accepted payments:
"La Caixa" transfer
Online payment trough Paypal

05

DELIEVER

DIN A1 Format
Archcase deliever.
- Pictures / Planes
- 250 characters text

06

JURY

Flores & Prats

Josep Mª Garcia Fuentes
Adolf Sotoca

07

PRIZES

First prize	1 500€
Second prize	1 000€
Third prize	500€

08

COLABORATORS

Estrella Damm, On diseño, Tectónica, Universidad Politécnica de Cataluña, HIC, Verdes & Future Arquitectura.

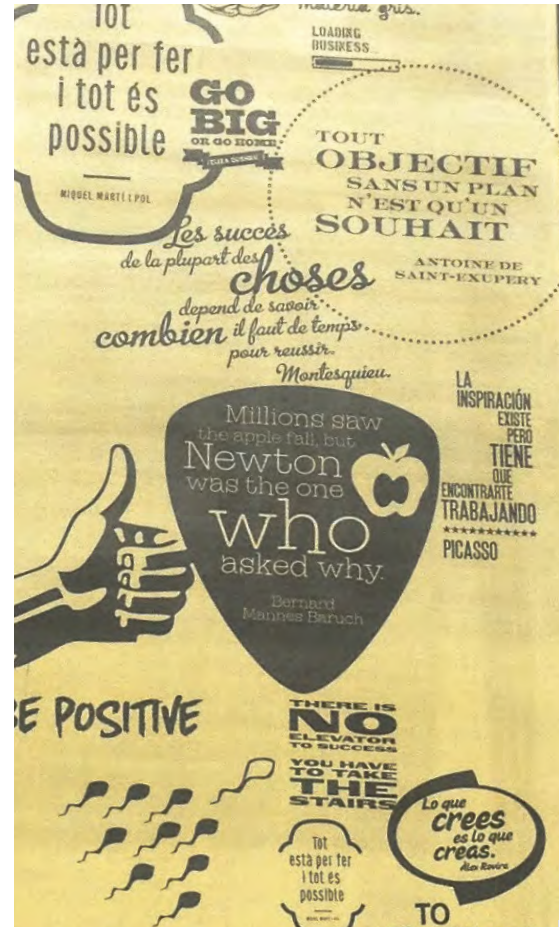
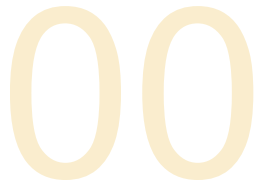
INTRODUCTION

From more than a decade innovation on the business world has evolved exponentially. Silicon Valley is the world's largest ecosystem on this camp. It's potential is measured on global terms and the innovation of the companies installed there suppose an important tractor of the national and universal R&D.

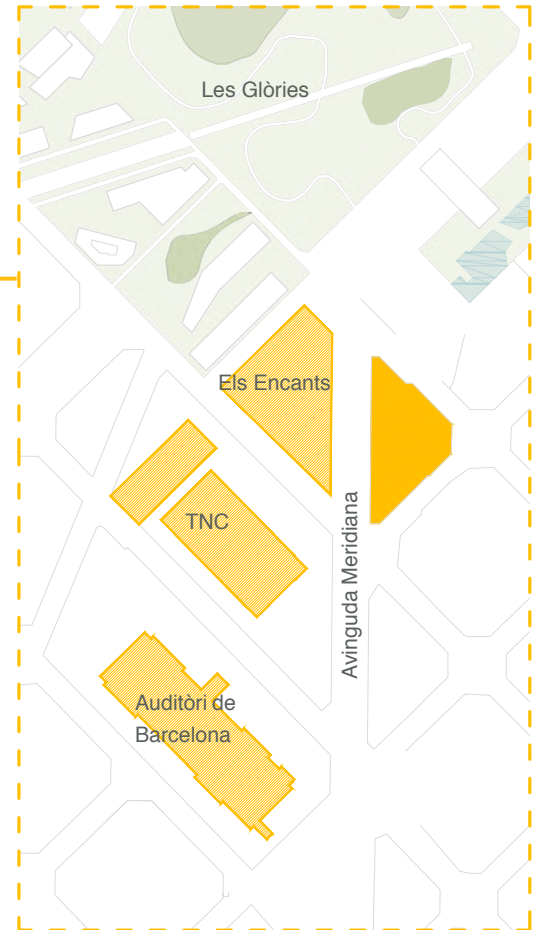
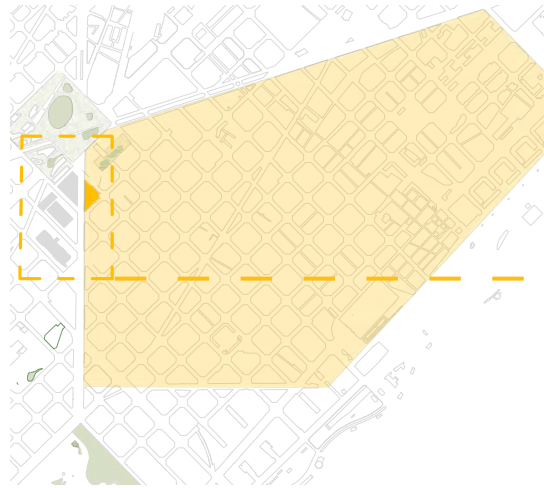
There are some factors shared with Barcelona that allowed the evolution of the system like: the good weather, that facilitates the settling of the workers; the business education, with important universities focused on entrepreneurship; the private capital, disposed to invest on new business models; and finally the innovative mind that being innate in America, in Barcelona is becoming more present, clearly enhanced by the emergence of various incubators in the city.

In this context and matching with the reurbanization of Las Glorias square and the new intermodal station La Sagrera, that suppose the extinction of the Estació de França, it's proposed to create a meeting place between business incubators projects in a location that coexists with the siding to the old train station.

The Meeting Point aims to be a permanent congress focused on growing projects of each incubator forging new relationships, investment, events and work together in the city. The center precise spaces as and auditorium, events rooms, temporal coworking spaces, offices for the incubators, an entrance hall with expositions and all preceded by a good public space that joins with the new town center.



LOCATION



As an entrance door to the 22@ District from the new park of Las Glorias it's found an urban void capable of hosting the proposed activity.

In front of Els Encants market, the National Theater of Catalunya and Barcelona's Auditorium, we find the opportunity to add activity to this hub and approach the innovative life of the district to the new park.

With the launching of the intermodal station at La Sagrera, the old Estacio de França and the roads that lead to it become obsolete and their expected use change adds the need to adapt the gaps that leave the roads to new city programs.

01

PROGRAM



Public space
300 sqm

The relation between the Meeting Point and the new Glorias square, as well as the 22@, neighbourhood must contain the flora's macronode according with the Glorias project.



Entrance hall
100 sqm

The access to the building must create the need of permeability to the inside together with the public space. The surface can be combined with other uses.



Temporary exhibition
150 sqm

Exhibition of new projects must have temporary place in some spaces. Culture and art are constant in the innovation world that must remain linked.



Auditorium
500 personas

It is prevised a central space where can be exhibited new business, make big speeches and above all an space for the meeting between different sectors of the city.



Coworking
150 sqm

Coworking joint work aims to bring a specific purpose for each meeting being held in the Meeting Point. Temporary coworking with long-term goals.



Event spaces
200 sqm

As alter ego of the auditorium, added rooms that can accommodate conferences, promotional events, events or classes are proposed. Multipurpose rooms that allow flexibility.



Cafe
150 sqm

In this country bars and cafes are know as hubs for both social and business activity. This space must answer to the needs of the sector.



Administration
150 sqm

Searching coexistence of different incubators, public administrations, private investors and startups, permanent spaces for each sector are proposed.

02

GENERAL INFORMATION



Student's participation terms

Participation limited to architecture students or other related studies. Master or doctorate students's participation is allowed they've less than two years of the Architect graduation.



Multiple deliveries

It is allowed to deliver multiple proposals by team, inscribing the team so many times as proposals wanted to deliver. Although at any case will be considered as complementary delivers and will be always judged separately.



Qualitative composition of the team

Teams from different universities and countries are allowed, as multidisciplinary but being always recommended the participation of at least one architecture student.



Quantitative composition of the team

Teams should be composed by a maximum of four members, being always allowed the individual participation.
The prize will be always by team.

03

GENERAL INFORMATION



Edition of the team

At any moment, before the deliver of the proposal, it's possible to change the composition of the team: change of name, add, modify or erase members and change access data.
Once delivered the project, the edition will be interrupted and the provided data will be definitive.



Incompatibilities of participation

It's not allowed the participation of any member of the jury nor the organization, as well as any person with familiar or professional relationship with them.



Discounts by multiple inscription

Ambassador | For each team that you bring it will get 20% discount and you'll get a 10%* on your inscription (or for the next one in case of being already registered).

Community | For multiple inscriptions up to 5 teams an special discount of the 30% on the total price.

*cumulative discounts up to 10 per contest



More information

This brief of the competition is a summary of the legal terms of participation that can be consulted at:

www.archallenge.com/legal

03

INSCRIPTION

Payment options

In order to complete the inscription is necessary to formalize the payment through one of our payment methods. The breach of this step exempts the right of participation of the inscribed participants.



Payment through Paypal it's realized through our online inscription.

Entity: CAIXABANK

Holder: Archallenge



Concept: ex. XXX (inscription code)

IBAN: ES59 2100 0422 4901 0087 9100

SWIFT: CAIXESBBXXX

Pay-Pal or credit card: It is the fastest and safest way to formalize your online payments. Just following the steps on our website.

Bank Transfer: You can also make a transfer to our bank account.

Calendar

First period 40€ + VAT

May 15th, 2015
June 30th, 2015

Second period 55€ + VAT

July 1st, 2015
July 31th, 2015

Third period 70€ + VAT

August 1st, 2015
August 30th, 2015

Deliver dead-line

September 4th, 2015
23:59 GMT +0

Results

September 30th, 2015

04

The payment must be realized within the next working days after the inscription date. Otherwise the account will be automatically disabled, forcing the team to re-enroll.

	Prices with VAT
first inscription period	48,40 €
second inscription period	66,55 €
third inscription period	74,70 €

DELIVER

A1 panel



The proposal panel will be the only document judged by the jury.

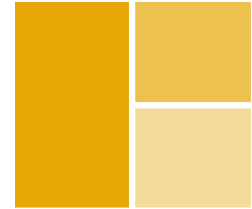
1. It must meet with the HORIZONTAL DIN A1 format
2. It must include the inscription code with the format AAA
3. The panel CAN'T include the team's name nor any other personal name
4. The file name must contain the format "AAa.name_of_the_team.jpg"

The deliver must contain all the necessary information for the explanation of the project. The jury will evaluate the distribution of the information and the concreteness of the idea in the panel, as well as the presentation of the proposal.

The content in the panel is free, leaving at the team's election choose the presentation methods as well as the content that must appear to explain the project in the clearest way possible. The organization recommends that it appears:

- Strategy/concept and justification
- Representative plan of the proposal
- Representative cut of the proposal
- Perspective of the proposal

Complementary deliver



The complementary deliver can't contain any document that is not on the A1 panel, except for the text that can be different or not be included.

This is composed by:

1. Between three and five images or drawings
2. Explanatory text under 250 words length

*this deliver pretends facilitate the future publications of the work on blogs and magazines.

05



ADMITTED FORMATS



ADMITTED LANGUAGES



***all the proposals must be uploaded to the website before the deadline. Every file received after that will automatically lose the right of participation.**

JURY



Ricardo FLORES + Eva PRATS

In 1998 founded his own studio Flores & Prats, dedicated to confront academic theory and practice in design and construction. After an experience in the study of Enric Miralles, develop together a race where research is always linked to the responsibility of building, an interest that projects are made, manufactured and can participate freedom of interpretation that gives the built work.



Arquitectura G

ARQUITECTURA-G is an architecture studio from Barcelona specially dedicated to edification and teaching. The material aspect is fundamental to the study, being understood as a field of research.

In 2015 it has been awarded Mies van der Rohe Emerging Architect for her project 'Casa Luz'. The award is the most prestigious architectural recognition of the European Union.



Josep Mª GARCIA FUENTES

Architect by the Superior Technical School of Architecture of the Vallès (ETSAV-UPC), where he is professor of composition and teaches projects. He is also a professor at Newcastle University and visiting professor at various international universities. He has worked as an architect in BOMA & Asociados, Juan Navarro Baldeweg and Josep Llinás.

Winner of National Award in Architecture Graduate Spanish.

06



Adolf SOTOCA

Professor in the Department of Urban Planning at the UPC, where he teaches Urban Planning at the undergraduate, master's and doctorate.

Doctor by the Department of Urbanism of the UPC in 2006, having previously received the titles of architect and Master in Urban Design at the ETSAB-UPC.

Since 2002 he teaches at the UPC and has been a guest professor at several international universities.

PRIZES

1ST

1 500€

+

Physical subscription during six months to ONdiseño magazine

+

Online subscription during one year to OnDiseño magazine
www.ondiseño.com

Digital subscription during a year to Tectónica magazine
www.tectonica-online.com

One number of DTF magazine for each member of the team
www.dtfmagazine.com

2ND

1 000€

+

Online subscription during one year to OnDiseño magazine
www.ondiseño.com

Digital subscription during a year to Tectónica magazine
www.tectonica-online.com

One number of DTF magazine
www.dtfmagazine.com

3RD

500€

+

Online subscription during one year to OnDiseño magazine
www.ondiseño.com

Digital subscription during a year to Tectónica magazine
www.tectonica-online.com

One number of DTF magazine
www.dtfmagazine.com

MENTIONS

Online subscription during one year to OnDiseño magazine
www.ondiseño.com

Digital subscription during a year to Tectónica magazine
www.tectonica-online.com

One number of magazine
www.dtfmagazine.com

EXHIBITION ON THE
DIFFERENT ARCHALLENGE SPACES

07

Possible publications HIC Arquitectura | Barcelona Centre de Disseny | ON diseño | diario DESIGN | Taller de concursos | Editorial Veredes | Galarq | Arquiparados | Espaço de Arquitectura | Archilovers | Progetto Energia Zero | Scale in aluminio | Tecnici | WA | Bauwelt | Competition online | Sztuka-architektury | Architektura info | Holcim awards | Archdaily | Arq | Arquimaster | Arquitectura crítica | Arqhys | The Competition Blog | AC Arch Competition | Future Arquitectura | Tectónica | t18 magazine | 2-arquitectos | entre otros

With the collaboration of:



CONTACT

www.archallenge.com

info@archallenge.com |

[@archallenge](https://twitter.com/archallenge) |

passeig de sant joan 144, 08037 Barcelona |